



**OTCQX: LMRMF**  
**TSX-V: LMR**

[LOMIKO.COM](http://LOMIKO.COM)

[INFO@LOMIKO.COM](mailto:INFO@LOMIKO.COM)

SUPPLYING THE NEW DEMAND FOR GRAPHITE IN LI-ION BATTERIES  
满足锂离子电池对石墨的新需求



# Forward-looking Statements Advisory 前瞻性陈述



This document may contain "forward-looking statements" within the meaning of Canadian securities legislation. These forward-looking statements are made as of the date of this document and Lomiko Metals Inc.. (hereinafter referred to as the "Company") do not intend, and do not assume any obligation, to update these forward-looking statements. Forward-looking statements relate to future events or future performance and reflect management of the Company's expectations or beliefs regarding future events and include, but are not limited to, statements with respect to the estimation of mineral reserves and resources, the realization of mineral reserve estimates, the timing and amount of estimated future production, costs of production, capital expenditures, success of mining operations, environmental risks, unanticipated reclamation expenses, title disputes or claims and limitations on insurance coverage. In certain cases, forward-looking statements can be identified by the use of words such as "plans", "expects" or "does not expect", "is expected", "budget", "scheduled", "estimates", "forecasts", "intends", "anticipates" or "does not anticipate", or "believes", or variations of such words and phrases or statements that certain actions, events or results "may", "could", "would", "might" or "will be taken", "occur" or "be achieved" or the negative of these terms or comparable terminology. By their very nature forward-looking statements involve known and unknown risks, uncertainties and other factors which may cause the actual results, performance or achievements of the Company to be materially different from any future results, performance or achievements expressed or implied by the forward-looking statements. Such factors include, among others, risks related to actual results of current exploration activities; changes in project parameters as plans continue to be refined; future prices of resources; possible variations in ore reserves, grade or recovery rates; accidents, labour disputes and other risks of the mining industry; delays in obtaining governmental approvals or financing or in the completion of development or construction activities; as well as those factors detailed from time to time in the Company's interim and annual financial statements and management's discussion and analysis of those statements, all of which are filed and available for review on SEDAR at [www.sedar.com](http://www.sedar.com). Although the Company has attempted to identify important factors that could cause actual actions, events or results to differ materially from those described in forward-looking statements, there may be other factors that cause actions, events or results not to be as anticipated, estimated or intended. There can be no assurance that forward-looking statements will prove to be accurate, as actual



**LOMIKO**  
METALS

# FUTURE MARKET TRENDS & LOMIKO MILESTONES 未来市场趋势及LOMIKO里程碑

## TRENDING MARKETS / 市场趋势

- Global Demand for Flake Graphite Will Outstrip Supply 2018 / 2018年全球片状石墨需求将超越供应
- New Investments in Cryptocurrency and Internet of Things / 加密货币和物联网领域的新投资  
[WWW.PROMETHIEUS.COM](http://WWW.PROMETHIEUS.COM) AND / 和 [WWW.SHDEVICES.COM](http://WWW.SHDEVICES.COM)

## LOMIKO' S 2018 GOALS / LOMIKO 2018年目标

- Drill New Discovery 110 M of 14.56% Cg Needs to be included in 43-101 / 需要将1.1亿吨石墨品位14.56%的钻探新发现加入 43-101报告中
- Complete further Graphite Metallurgy, Purity and Characterization Tests / 完成进一步的石墨冶金、纯度和特性描述试验
- Upgrade 43-101 Resource filed for La Loutre of 4.1 Mt of 6.5% indicated / 升级La Loutre 项目410万吨6.5%的43-101指示资源量



IS LOMIKO UNDERVALUED? A CHART OF COMPARABLES (LMR IN BLACK) / LOMIKO  
是否被低估？对比图（LMR为黑色）



# THE GRAPHITE MARKET TODAY

## STEEL MARKET AND LI-ION BATTERIES

# THE GRAPHITE MARKET

## SUPPLY



**70%** of the world's graphite market.

**40%**

Flake Graphite



**60%**

Amorphous Graphite

### Highest price Lowest supply

High purity crystal flake graphite supply is very limited. Only this kind of natural graphite can be used for Li-ion batteries, fuel cells, and other green tech.

High  
Carbon  
Purity

Large  
Flake  
Size



Carbon Flake Purity directly affects the price of the resource

## DEMAND



**5%** growth in the last decade.  
Driven by Asian steel and auto markets

**USD \$12,000,000,000**

(Estimated worldwide Graphite market in 2011)

Tonnes  
per year  
1,300,000  
1,100,000  
900,000  
700,000  
500,000  
300,000  
100,000

**Ni**

Nickel

**Graphite**

**1.1 million tonnes per year**

Compare Graphite with other markets

**Mo**

Molybdenum

**REE**

Rare Earth

**Li**

Lithium




**LOMIKO**  
METALS.

# 当今石墨市场 钢铁市场和锂离子电池

## 石墨市场

### 供应

 **70%**  
中国占世界石墨市场的70%

**40%**  
Flake Graphite  
片状石墨



**60%**  
Amorphous Graphite  
无定型石墨

### 最高价 最低供应

高纯度透明片状石墨供应非常有限。只有这种天然石墨能够用于锂离子电池、燃料电池和其他绿色技术行业。

高碳  
纯度

大片状



碳片纯度直接  
影响资源价格

### 需求



**5%** 过去十年增长  
受亚洲钢铁和汽车市场驱动

**USD \$12,000,000,000**  
(2011年估测全球石墨市场规模)

Tonnes  
per year

1,300,000

1,100,000

900,000

700,000

500,000

300,000

100,000

**Ni**  
Nickel  
镍

### Compare Graphite with other markets

对比石墨与其他市场

**石墨**  
Graphite **1.1 million tonnes per year**  
110万公吨/年

钼

**Mo**  
Molybdenum

稀土元素

**REE**  
Rare Earths

锂

**Li**  
Lithium



**LOMIKO**  
METALS.



# GRAPHITE'S FUTURE IS IN LI-ION BATTERIES



**GRAPHITE IS  
A CRITICAL  
COMPONENT OF  
LITHIUM ION  
BATTERIES AND  
CANNOT BE  
ECONOMICALLY  
SUBSTITUTED.**

**VIRTULLY ALL COMMERCIAL  
LI-ION BATTERIES USE GRAPHITE**

**UP TO 15X MORE GRAPHITE THAN  
LITHIUM IS NEEDED TO MAKE  
EACH BATTERY.**



THE RATIO  
DEPENDS ON  
THE CATHODE  
MATERIAL

**GRAPHITE 8:1 NCA**



[ LITHIUM NICKEL/COBALT/ALUMINUM ]

**GRAPHITE 13:1 LFP**



[ LITHIUM IRON PHOSPHATE ]

**GRAPHITE 15:1 LMO**



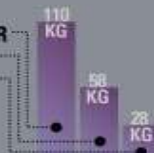
[ LITHIUM MANGANESE OXIDE ]

## DEMAND DRIVERS FOR LI-ION BATTERIES

### A ELECTRIC & HYBRID VEHICLES

AMOUNT OF GRAPHITE  
IN BATTERY:

TESLA ROADSTER  
NISSAN LEAF  
CHEVY VOLT



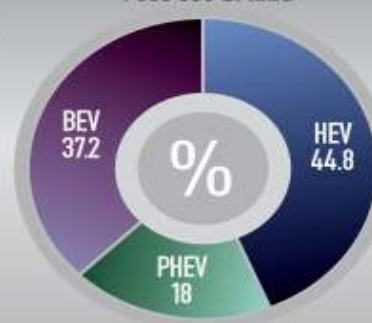
157 000 SALES

2004

735 000 SALES

2010

4 000 000 SALES



2020 (proj.)

**HEV**

**HYBRID ELECTRIC VEHICLE**

USES BATTERY POWER TO BOOST EFFICIENCY OF ENGINE

**PHEV**

**PLUGIN HYBRID ELECTRIC VEHICLE**

USES BATTERY POWER OR INTERNAL COMBUSTION ENGINE

**BEV**

**BATTERY ELECTRIC VEHICLE**

USES ONLY BATTERY POWER



**LOMIKO  
METALS.**

石墨的未来在于锂离子电池。



GRAPHITE IS  
A CRITICAL  
COMPONENT OF  
LITHIUM ION  
BATTERIES AND  
CANNOT BE  
ECONOMICALLY  
SUBSTITUTED.

石墨是锂离子电池的关键成分，  
并且没有经济的替代品。

VIRUTALLY ALL COMMERCIAL  
LI-ION BATTERIES USE GRAPHITE

生产每一个电池对石墨的需求量  
比锂最多高出15倍



比率取决于  
阴极材料

GRAPHITE 8:1 NCA 石墨8:1 镍钴铝电池



GRAPHITE 13:1 LFP 石墨13:1 磷酸铁锂电池



GRAPHITE 15:1 LMO 石墨15:1 锰酸锂电池



DEMAND DRIVERS FOR  
LI-ION BATTERIES

锂离子电池需求  
的驱动因素

A 电动汽车和混合动力汽车

电池中的石墨量



HEV 混合动力汽车

HYBRID ELECTRIC VEHICLE

USES BATTERY POWER TO BOOST EFFICIENCY OF ENGINE  
使用电池动力来提高发动机效率

PHEV 插电式混合动力汽车

PLUGIN HYBRID ELECTRIC VEHICLE

USES BATTERY POWER OR INTERNAL COMBUSTION ENGINE  
使用电池动力或内燃机发动机

BEV 纯电动汽车

BATTERY ELECTRIC VEHICLE

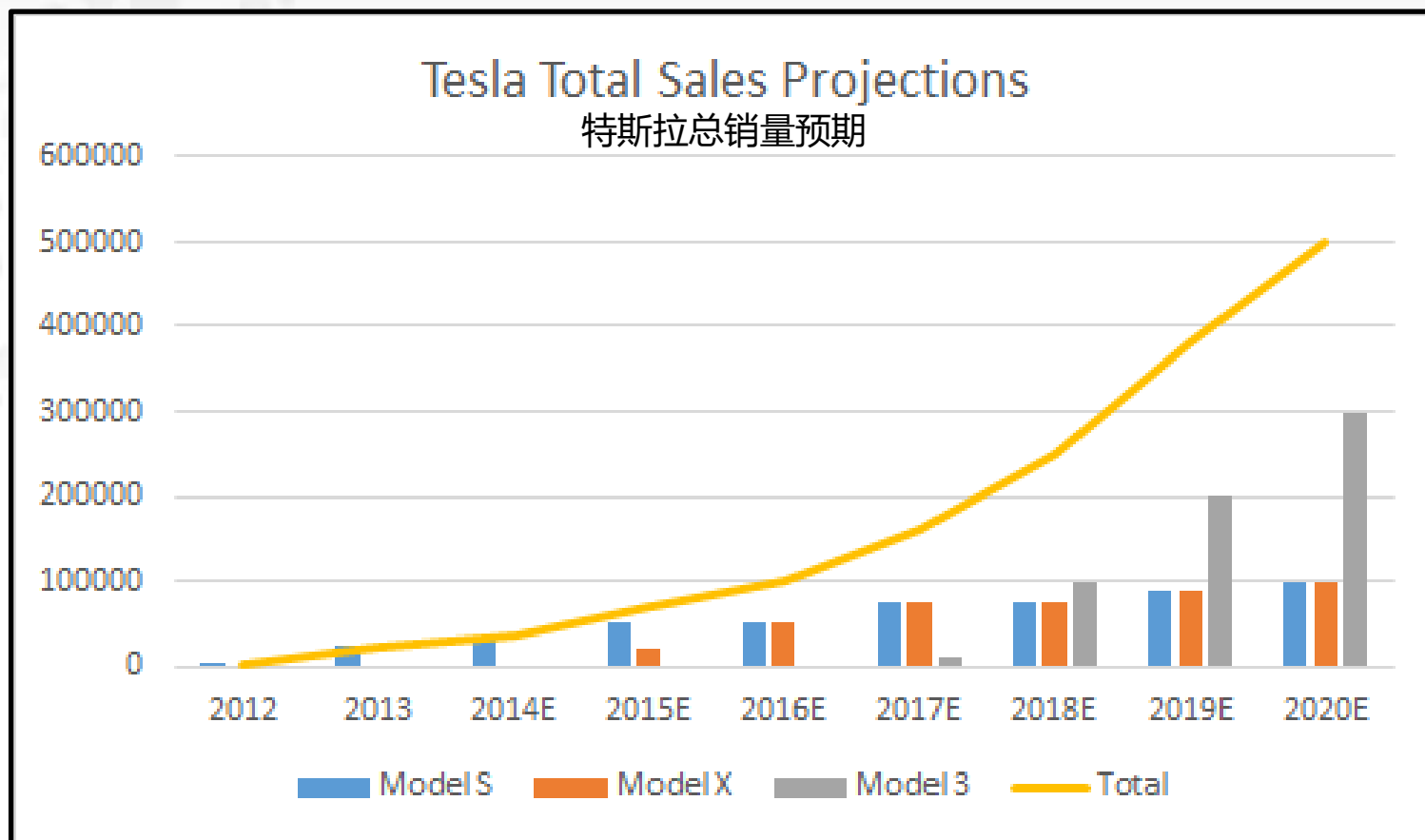
USES ONLY BATTERY POWER 只使用电池动力



LOMIKO  
METALS.



## TESLA SALES GROWTH 特拉斯销量增长



# BATTERY MATERIALS DEMAND GROWTH

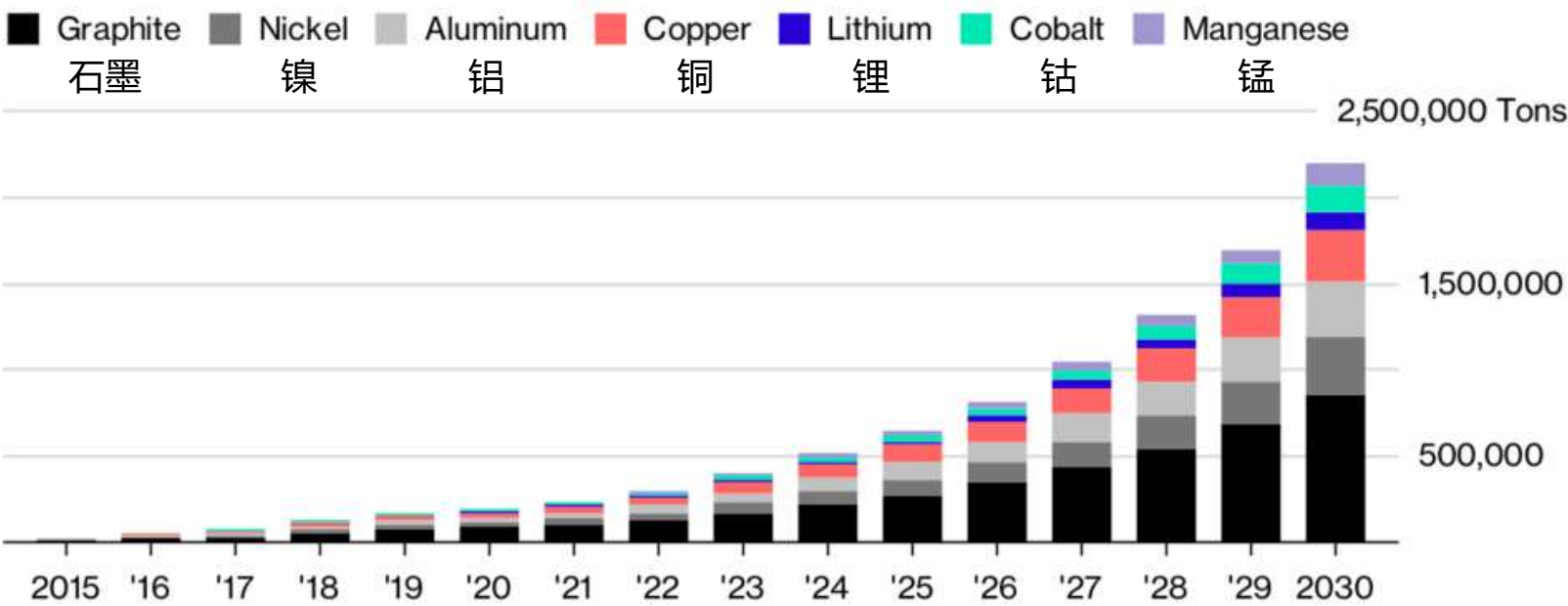
## 电池材料需求增速



### Metal Winners 金属赢家

随着电动汽车电池市场扩大，从钴到锂的金属需求预计将飙升

Cobalt to lithium demand is forecast to soar as electric vehicle markets expand



Source: Bloomberg New Energy Finance

Bloomberg

# THE TESLA GIGAFACTORY IMPACT ON LI-ION BATTERIES 特斯拉超级工厂对锂离子电池的影响

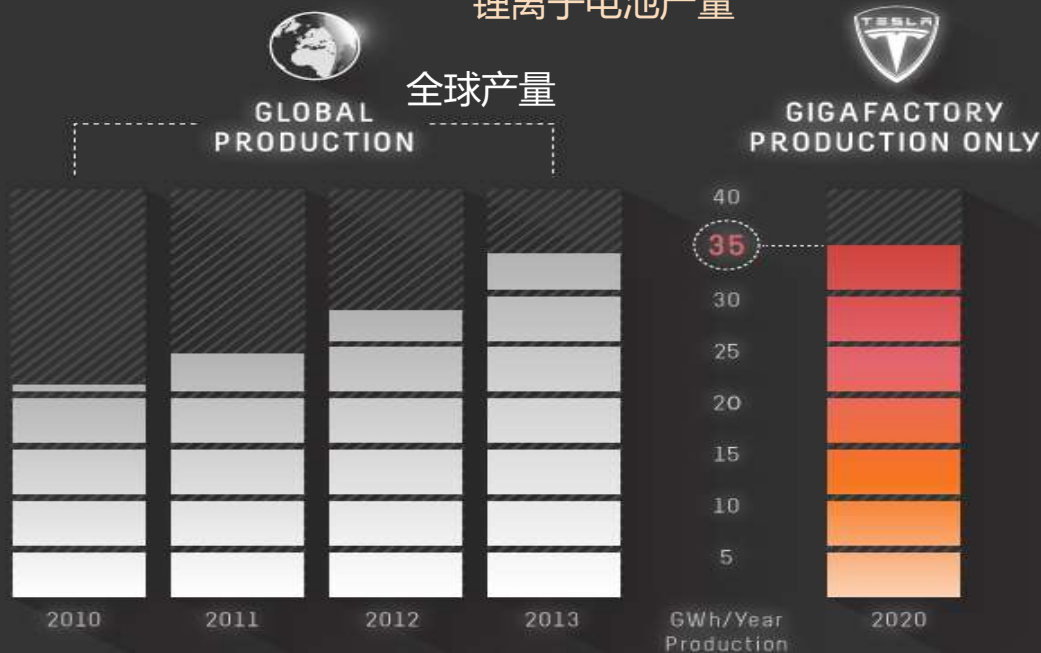


THE GIGAFACTORY WOULD PRODUCE THE EQUIVALENT OF ALL 2013 LITHIUM-ION BATTERY PRODUCTION IN THE WORLD IN JUST ONE FACTORY.

超级工厂仅通过一个工厂就将可以生产相当于2013年全球总产量的锂离子电池

## LITHIUM-ION BATTERY PRODUCTION

锂离子电池产量



仅超级工厂  
的产量



**LOMIKO**  
METALS.



# TESLA'S PROJECTED IMPACT ON THE GRAPHITE MARKET BY 2020



## RAW MATERIALS



UBS, a bank, notes that raw materials account for **70%** of the price of a lithium battery.

The main battery raw materials are:



### GRAPHITE

NATURAL OR SYNTHETIC GRAPHITE IS USED IN THE ANODES OF LITHIUM-ION BATTERIES. **NATURAL GRAPHITE IS CHEAPER THAN SYNTHETIC.**

2013 GRAPHITE PRODUCTION



GIGAFACTORY DEMAND INCREASE (Battery-grade graphite)



If Tesla plant exists, the 126,000 tonne increase is a 34% increase on total demand, and a **154% INCREASE** on battery-grade demand.



**LOMIKO**  
METALS.

# TESLA'S PROJECTED IMPACT ON THE GRAPHITE MARKET BY 2020

## 预计到2020年特斯拉对石墨市场的影响



**LOMIKO**  
METALS.

# QUEBEC LA LOUTRE FLAKE GRAPHITE EXCELLENT INFRASTRUCTURE / 魁北克省 LA LOUTRE片状石墨优越的基础设施

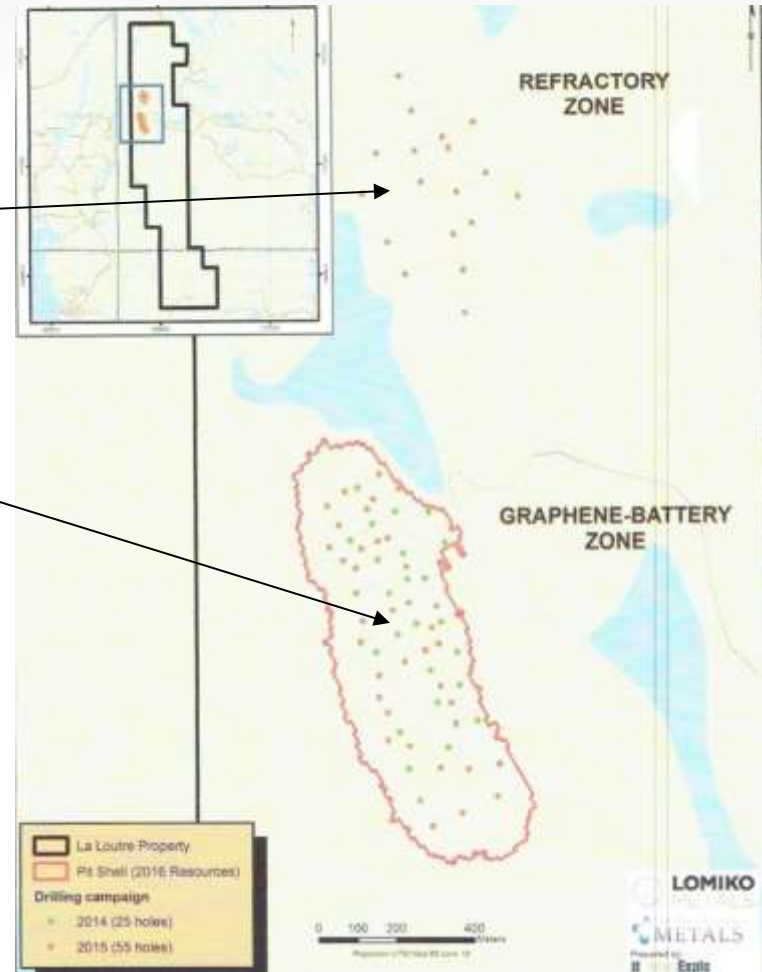
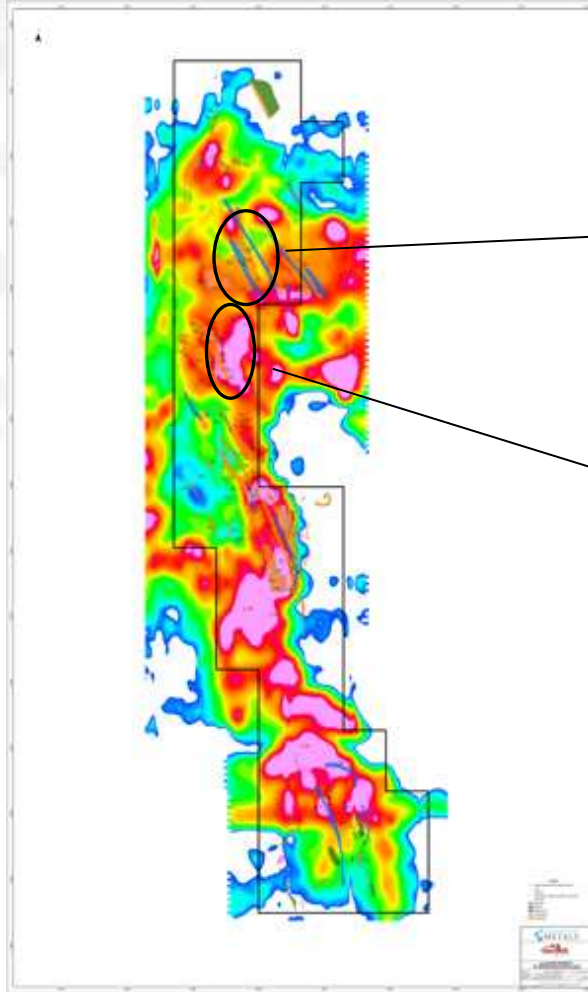
- 2,867.29 Ha Property / 2,867.29 公顷项目区
- 25 hole program planned Jan 2018 / 2018年1月规划25个钻孔项目
- Road to the Property built / 已建造到项目区的公路
- 192 km Highway to Port of Montreal / 与蒙特利尔港口公路距离192公里
- 53 km to 20 year IMERYS Mine which has 5.2MT open pit at 7.42% Cg / 与有着20年历史的IMERYS矿相距53公里，该矿有着520万吨石墨品位7.42%露天矿资源
- Near Surface Mineralization / 近地表成矿
- Open Pit, Large Scale Target / 露天矿大型靶区
- 80% owned, 100% earn-in started / 持有80%，已经开始挣得100%权益



**LOMIKO**  
METALS.

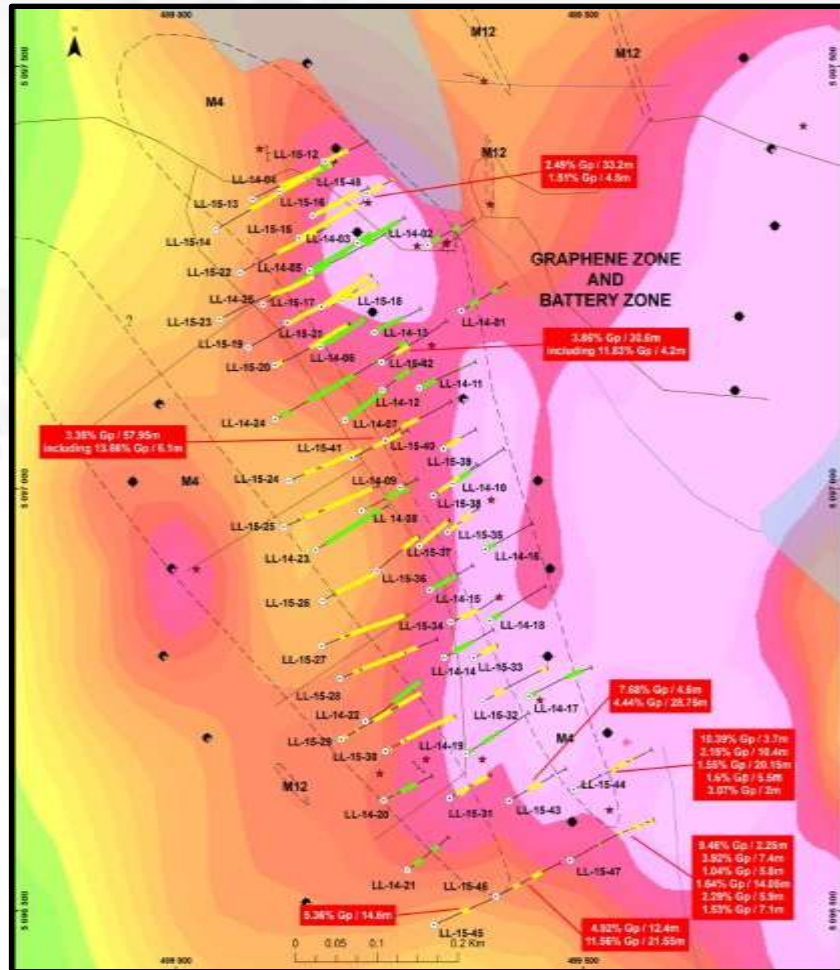


ONLY 2 OF 10 IDENTIFIED  
ANOMALIES AT LA LOUTRE DRILLED /  
LA LOUTRE 十个已发现的异常带仅钻  
探了两个



**LOMIKO**  
METALS.

TOP LINE RESOURCE OF 4.1 Mt of 6.5% CG IS  
 VERY SIMILAR TO PRODUCER IMERYS / 410万吨石  
 墨品位6.5%的顶级资源，与生产矿IMERYS十分相似



Indicated Resource				
Zone	Cut-off Cg (%)	Tonnage (metric tonne)	Grade Cg (%)	Graphite (metric tonne)
All Zones	> 3.0	4,137,300	6.50	268,800
	> 2.5	6,927,500	4.95	342,900
	> 2.0	15,181,200	3.49	529,200
	> 1.5	<b>18,438,700</b>	<b>3.19</b>	<b>588,400</b>
	> 1.0	19,005,400	3.13	595,700
	> 0.8	19,137,500	3.12	596,900
	> 0.6	19,279,600	3.09	595,300
	> 0.5	19,381,900	3.09	598,400
Inferred Resource				
Zone	Cut-off Cg (%)	Tonnage (metric tonne)	Grade Cg (%)	Graphite (metric tonne)
All Zones	> 3.0	6,181,000	6.11	377,600
	> 2.5	9,699,200	4.86	471,800
	> 2.0	15,332,000	3.92	600,300
	> 1.5	<b>16,675,100</b>	<b>3.75</b>	<b>624,900</b>
	> 1.0	16,927,300	3.71	628,000
	> 0.8	17,120,500	3.68	629,700
	> 0.6	17,306,700	3.63	628,100
	> 0.5	17,400,900	3.63	631,600



NEW HIGH GRADE 10%+ ZONE WITH SAME FOOTPRINT -  
BETTER ECONOMICS / 具有同样足迹的新的高品位区 (10%以上) -经济效益更佳

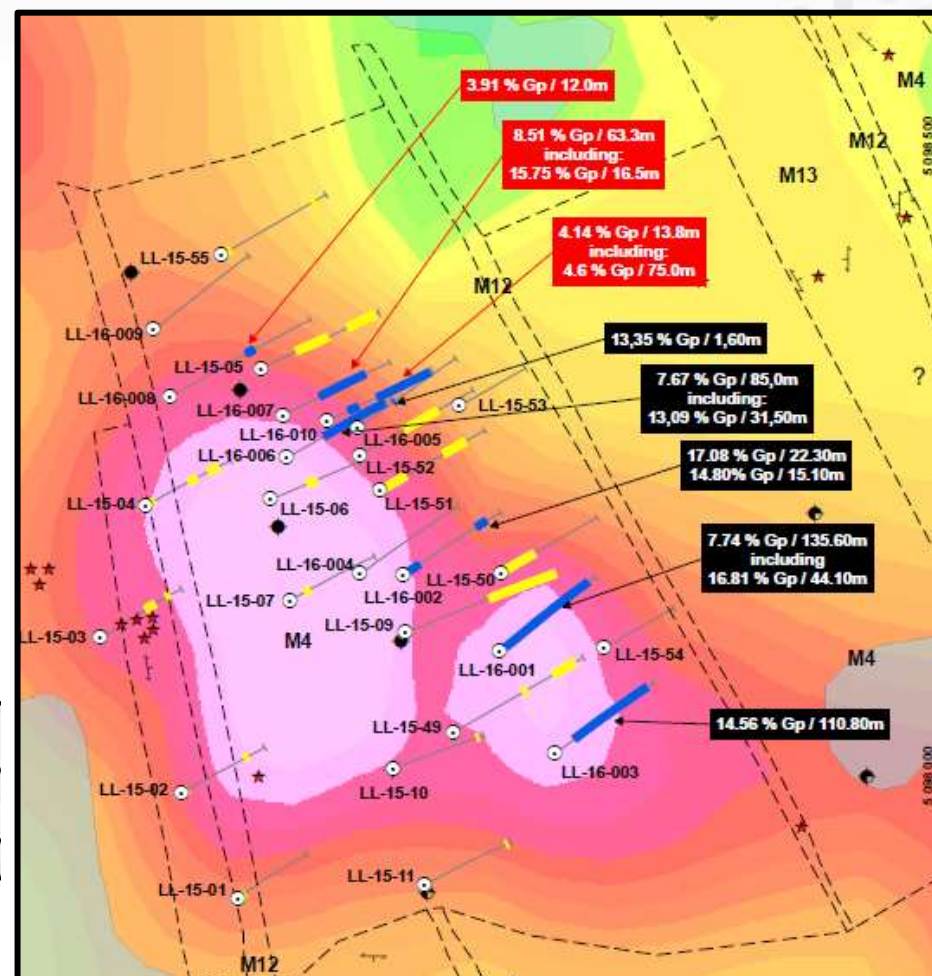
## 2016 DRILL HIGHLIGHTS (YELLOW)

### 2016年钻探亮点 (黄色)

Hole #	From (m)	To (m)	Length* (m)	Gp %
LL-15-50	2.20	48.45	46.25	5.43
including	5.80	9.75	3.95	17.95
including	42.70	46.95	4.25	15.56
LL-15-51	4.20	37.50	33.30	14.62
including	9.00	37.50	28.50	16.53
	91.55	122.50	30.95	8.18
including	91.55	98.50	6.95	18.31
including	115.00	122.50	7.50	9.61
LL-15-52	64.65	111.80	47.15	4.42
including	109.00	111.80	2.80	17.28

## 2017 DRILL HIGHLIGHTS (BLUE)

Hole #	From (m)	To (m)	Length* (m)	Gp %
LL-16-001	3.90	139.50	135.60	7.74
including	3.90	48.00	44.10	16.81
LL-16-002	3.90	26.20	22.30	17.08
	113.90	129.00	15.10	14.80
LL-16-003	30.20	141.00	110.80	14.56





## SHARE STRUCTURE

### 股权结构



Shares Issued / 已发行股票:

38,218,572

Fully Diluted / 完全摊薄后股数: 55,439,156

Market Capital / 市值: \$ 3,300,000

Working Capital / 运营资本: \$ 240,000

(Fully diluted) (完全摊薄后): \$ 4,240,000

1 YR EX. Budget / 一年支出预算: \$ 600,000

# MANAGEMENT TEAM

## 管理团队



### A. Paul Gill — Chief Executive Officer / 首席执行官

Mr. Gill is the President of AJS Management Inc., a company providing management consulting to private and public companies. From November 2003 to October 2006, Mr. Gill was heavily involved in the dynamic growth stage of Norsemont Mining (TSX: NOM) as a Officer, and Director, V.P. Business Development, while the company grew from a market capitalization of \$1 million to \$50 million with a final buyout of \$ 512 M. Mr. Gill is also a Director of Graphene 3D Lab (TSXV: GGG), CEO of Lomiko Technologies and an Advisor to Altair Resources (TSXV: AVX) / Gill先生是AJS Management Inc总裁，该公司为私人及上市公司提供管理咨询。2003年11月至2006年10月，Gill先生作为一名高管、董事及业务发展副总裁积极参与了Norsemont Mining (TSX: NOM)的动态增长阶段，期间该公司由市值\$100万增长至\$5000万，并最终以\$5.12亿的价格被全部买下。Gill先生还是Graphene 3D Lab (TSXV: GGG)董事、Lomiko Technologies首席执行官以及 Altair Resources (TSXV: AVX) 的一名顾问。

### Jacqueline Michael — Chief Financial Officer / 首席财务官

Ms. Michael has over 20 years of financial and administration experience. In 1988, Ms. Michael co-founded The Conac Group, a software development company for construction management, where she acted as President and CEO. In 1997, Ms. Michael was successful in taking the company public on the CDNX Exchange and helped raise over \$5 million in private placement financings for the company. Ms. Michael has acted as the President and Chief Executive Officer for public companies for over 10 years. / Michael女士拥有20年以上的财务和管理经验，1988年联合创立了建筑管理软件开发公司The Conac Group，并担任总裁兼首席执行官，1997年成功带领该公司在加拿大风险交易所上市，帮助该公司通过非公开发行融资超过\$500万。Michael女士十多年来一直担任上市公司总裁和首席执行官。



# DIRECTORS / 董事



## Julius Galik — Director / 董事

A business man and a financial advisor with PFSL, Mr. Galik has been involved in start-up situations within the mining exploration industry in Western Canada since 2002, and during the past 8 years has been instrumental in the development and financing of various small capitalized companies, both private and public. Between 2006-2007 Mr. Galik served as director of Dorex Minerals Inc. (TSX-V: DOX), and in September 2009 was elected Dorex President and CEO. / Galik先生是一名商人，也是PFSL金融顾问，自2002年以来一直参与加拿大西部矿产勘探行业创业领域，过去八年期间为多家小型私人及上市公司的发展和融资发挥了至关重要的作用。2006至2007年期间，Galik先生曾担任Dorex Minerals Inc. (TSX-V: DOX)董事，2009年9月被选为Dorex总裁兼首席执行官。

## Brian Gusko - Director / 董事

Brian has significant international business experience at the highest level. He was the CFO of UC Resources Ltd., an emerging producer of silver and gold in Mexico.. Years ago he was a research associate with the U.S. Department of Commerce at an embassy posting. His international experience includes working in Corporate Planning with a Mitsubishi Group company in Tokyo, Product Management at a Vodafone spin-off in the Netherlands, and being Managing Director of Palm South Africa's wireless subsidiary. Mr. Gusko received a Bachelor of Arts in Biology (1990) from Carleton University, and an MBA from the University of Calgary (2003). He currently serves on the Board of Directors of Emergent Waste Solutions, and is an Advisor to the Board of Solegear Bioplastics(a bio-plastic company). Brian is a Partner at Vancouver-based, Sustainable Capital Corporation, a capital markets advisory firm. / Brian拥有丰富的最高层国际商务经验，曾担任墨西哥新兴白银和黄金生产商UC Resources Ltd首席财务官，多年前曾是美国商务部派驻大使馆的一名助理研究员。他的国际经验包括曾在东京三菱集团公司参与企业规划，在沃达丰在荷兰拆分的公司从事产品管理，以及担任Palm South Africa无线子公司总经理。Gusko先生获得了卡尔顿大学生物学专业文学士（1990年），卡尔加里大学工商管理硕士（2003）。他目前是Emergent Waste Solutions董事会成员，并且是生物塑料公司Solegear Bioplastics的董事会顾问，也是温哥华资本市场咨询公司Sustainable Capital Corporation的合伙人。

